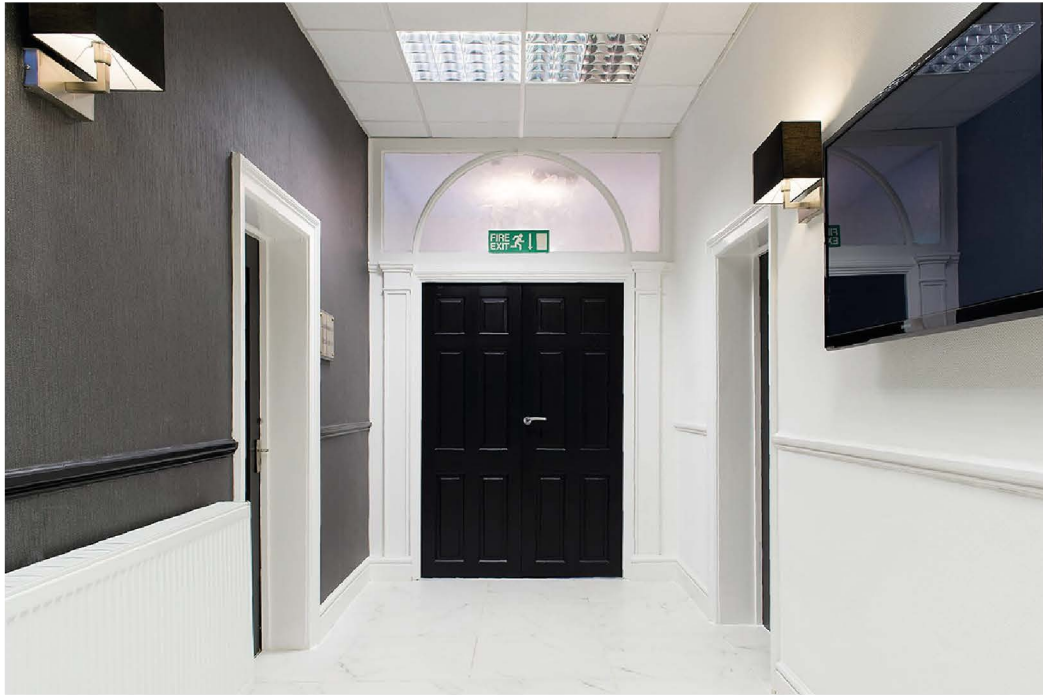


CHURCH  
BANK  
HOUSEBL1



## WELCOME TO CHURCHBANK HOUSE

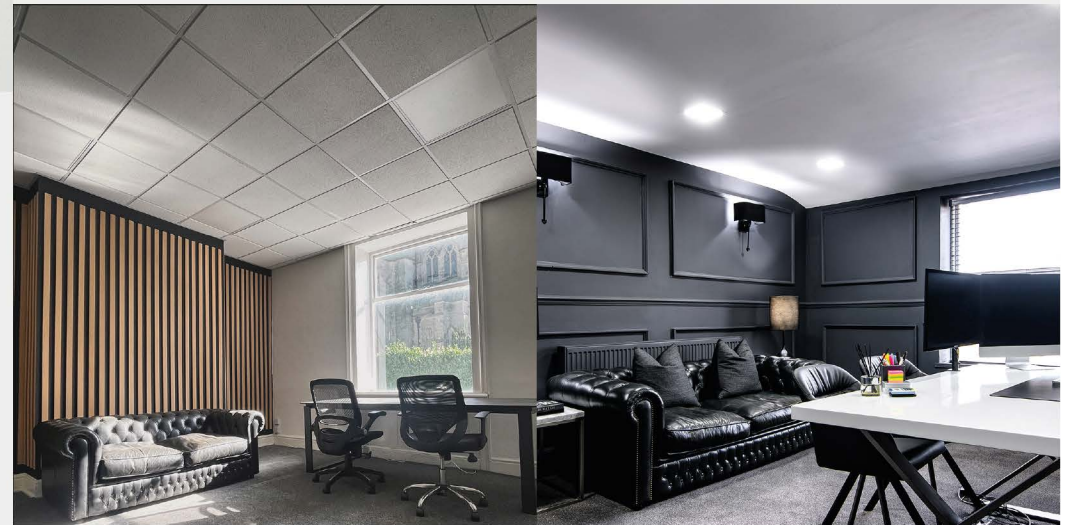
Churchbank House is ideal for Bolton businesses looking to relocate or transition out of co-working environments, where growth can be cost prohibitive. Our offices give occupiers the benefits of the upmarket feel as well as the exclusivity of having your own area and separate suite..

Located in a picturesque part of the town, the building consists of three floors, with rooms at the front of the building boasting great views of the Parish Church.

## BOASTING TRADITIONAL FEATURES

We understand in the modern business world that impressions count. Churchbank House offers spaces that deliver a traditional and professional look whilst providing a comfortable area with a touch of luxury.

Work spaces range from 500 to 1000sqft and all benefit from added facilities including modern WC's.





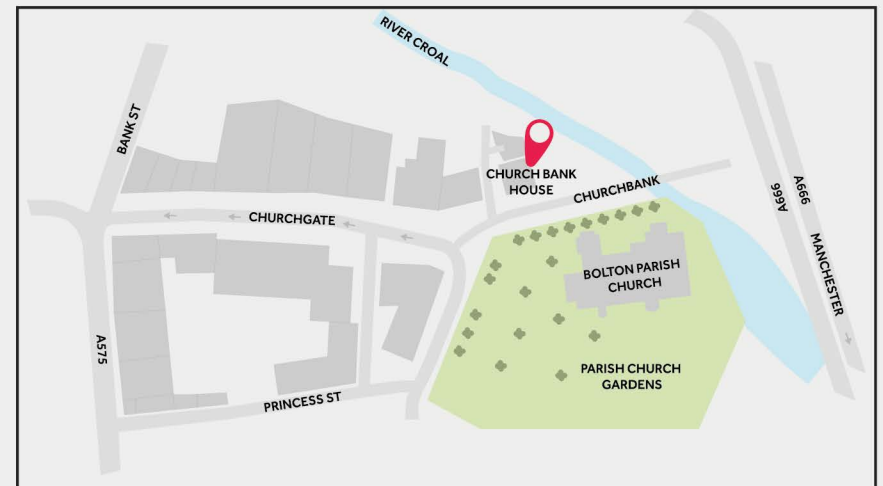
## THE LOCATION

Churchbank House is located next to the Parish Church: one of Bolton town centre's most historic and picturesque areas. The building is a stone's throw from the main high street of Deansgate which has the busiest retail activity in the heart of Bolton, with nearby occupiers such as Cafe Nero, Costa cafes as well as local shopping centres.

In terms of commuting, it is a 5-10 minute walk from Bolton train station and has a number of inexpensive car parks nearby.



Where to find us:







KEY  
LOCATION



PRIVATE  
PARING



SPACES  
AVAILABLE



WC  
FACILITIES



MEETING  
ROOMS



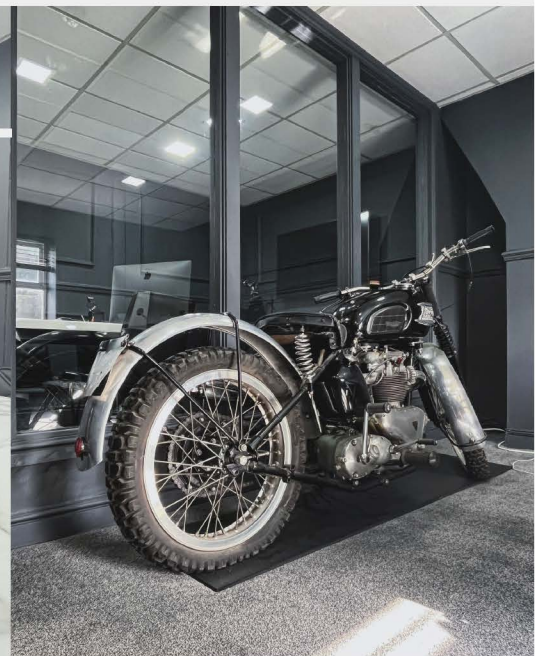
CLOSE TO  
AMENETIES

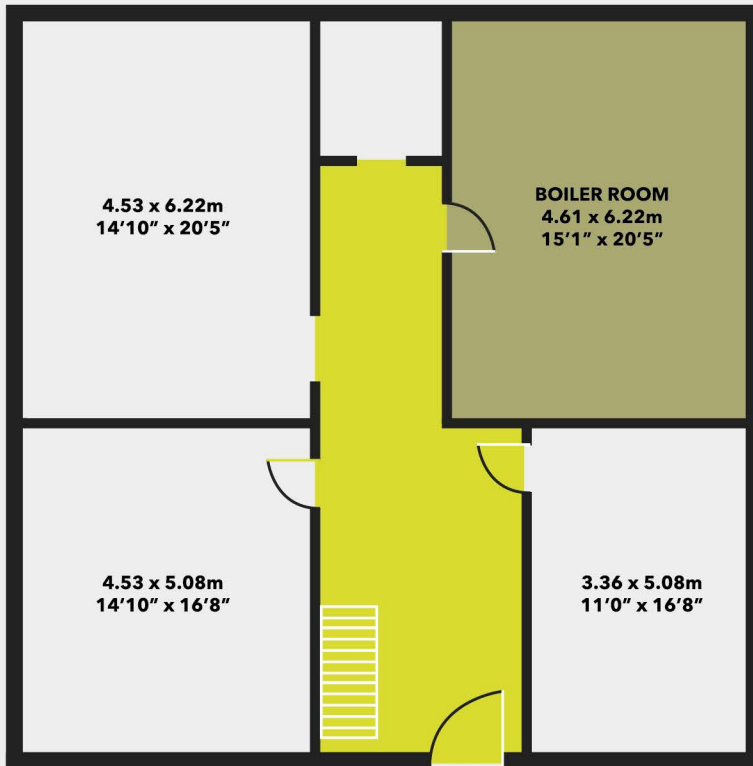


TRANSPORT  
LINKS

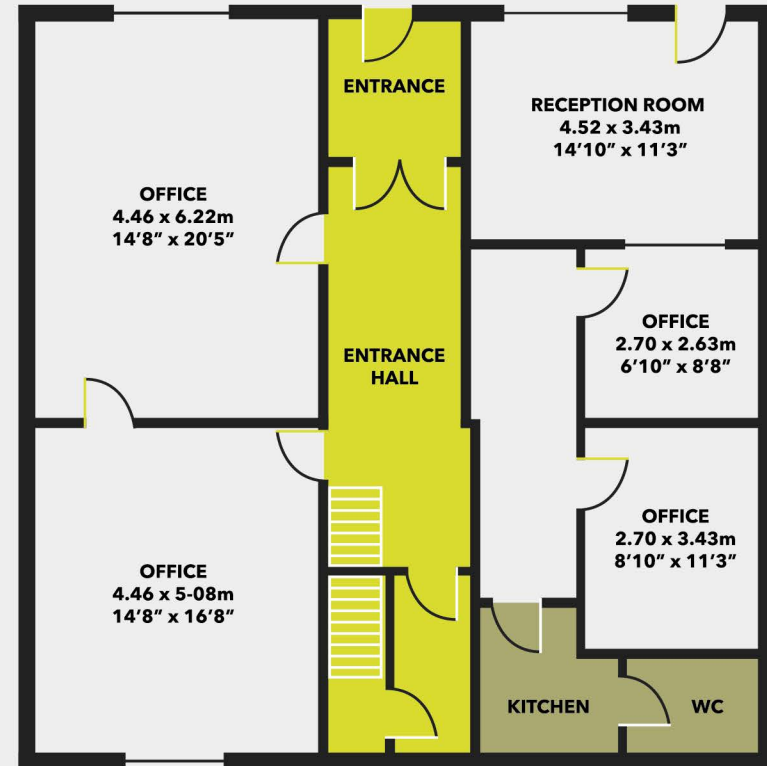


CLOSE TO  
CAFE'S

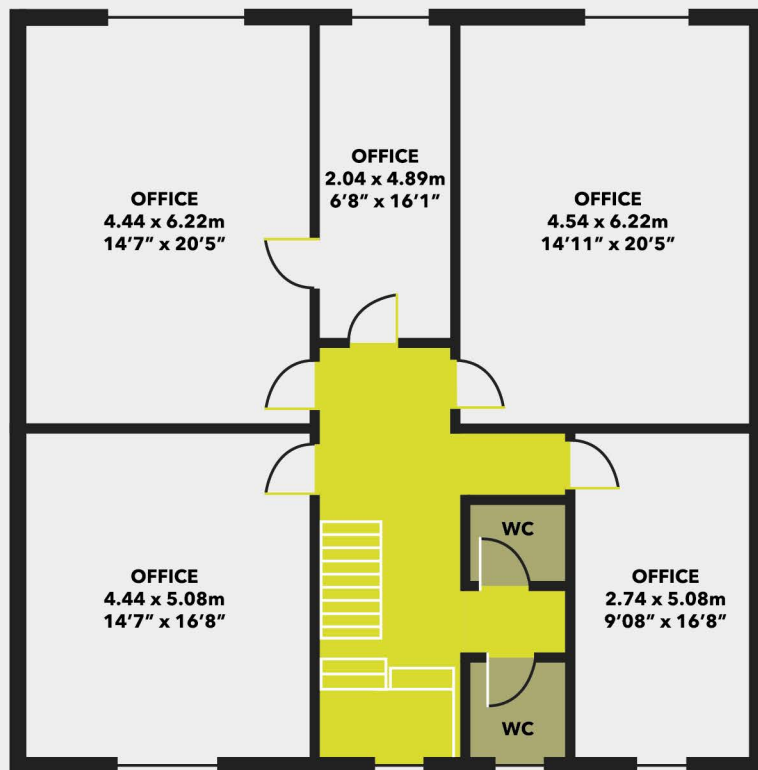




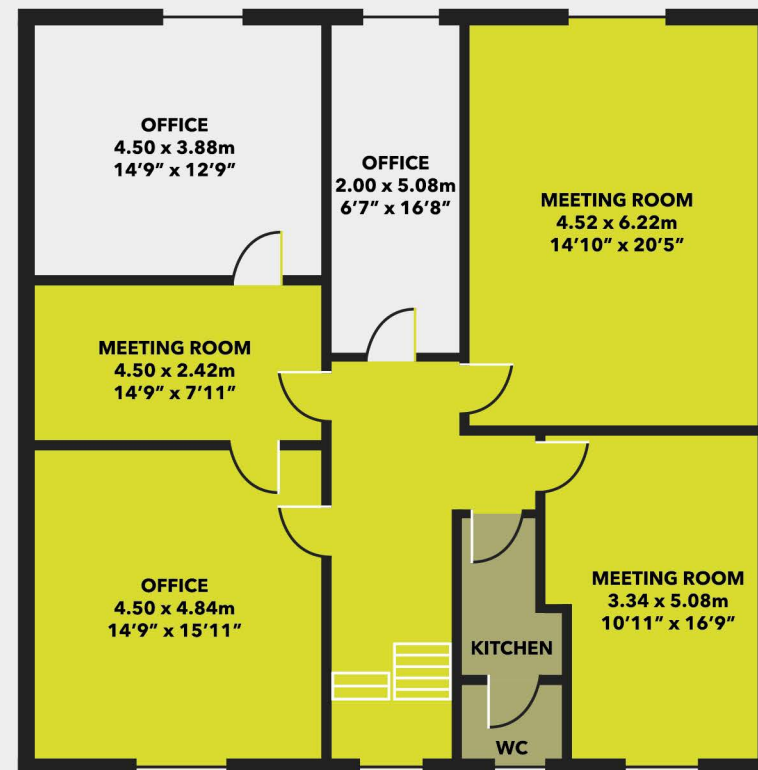
BASEMENT



GROUND FLOOR



FIRST FLOOR



SECOND FLOOR

# — Contact Us —



John Fletcher  
+44 (0)1204 221030  
[john.fletcher@fletchercre.co.uk](mailto:john.fletcher@fletchercre.co.uk)